



# Pavement Rehabilitation Project Enterprise Circle / Industrial Park Area

## CONSTRUCTION FACT SHEET



### Construction Schedule

SEP 2019 – DEC 2019

Combination night/day work

Sun-Thu 9:00PM – 5:00AM

Mon-Fri 7:00AM – 4:30PM



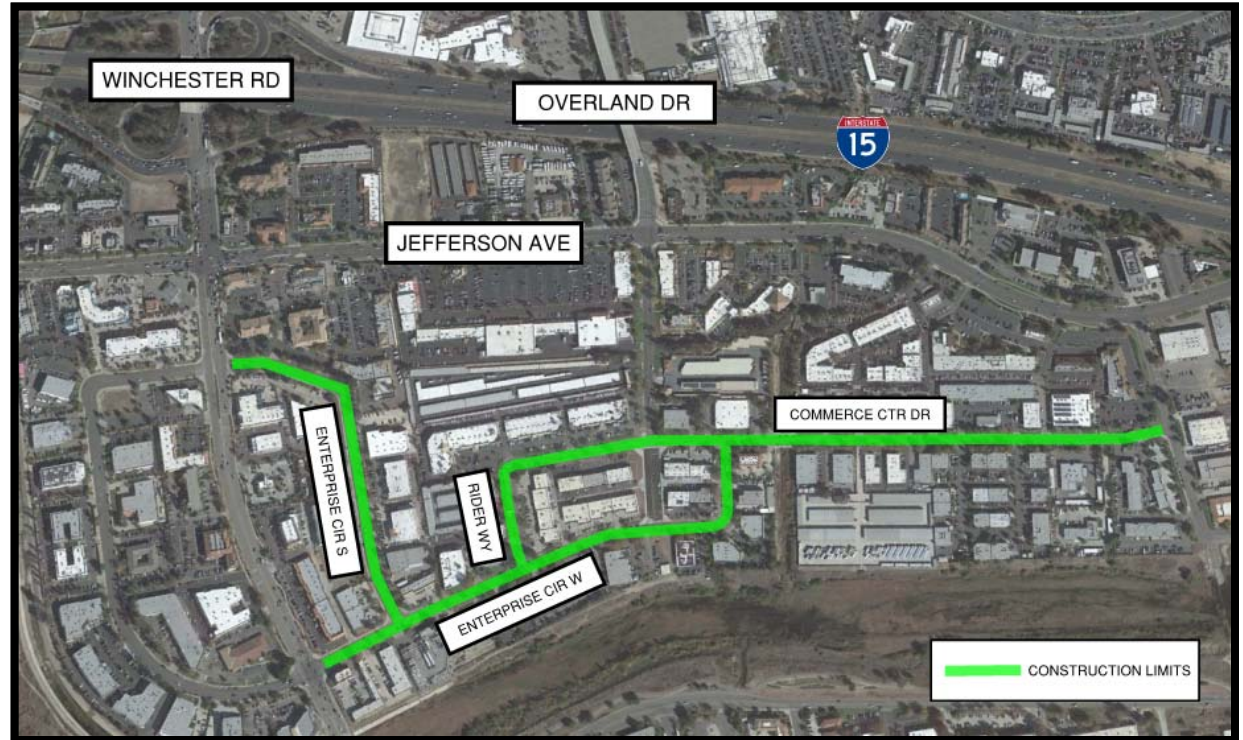
### Construction Cost \$700K

Funded by City General Fund,  
Measure A, and SB-1



### Construction

Eagle Paving Company  
Dept. of Public Works (951) 694-6432



### Project Details

Portions of Enterprise Circle West, Enterprise Circle South, Rider Way, and Commerce Center Drive will be improved with asphalt replacement, a rubberized asphalt overlay, and/or a rubberized slurry seal.

For weekly information on  
traffic updates go to  
[temeculaca.gov/tripreport](http://temeculaca.gov/tripreport)