

# Cancer Care

## Community Health Needs Assessment



### Southwest Riverside County



## Background

Cancer is the second leading cause of death in the United States. Cancer screening, prevention, treatment, and recovery can be a lengthy and difficult process for both patients and their support system.

In an effort to reduce the burden on people suffering from cancer, communities in Southwest Riverside County joined together to form a Regional Cancer Treatment Task force to address the issue.

HARC, Inc., a nonprofit research organization, was hired in 2017 to assist with this work.

This infographic summarizes the results of a community health needs assessment that HARC conducted in summer/fall of 2017. The needs assessment targeted cancer patients, survivors, caregivers, and healthcare providers in Southwest Riverside County.

## Mission

- Identify and promote existing cancer care resources within the region
- Identify and address any barriers to accessing those existing resources
- Identify and address any gaps in resources, including: the pipeline of care facilities and providers, prevention, diagnosis, treatment, and post-treatment.
- Create a plan to promote, foster, and maintain desired cancer care resources within the region

## Funders



City of Lake  
Elsinore

City of  
Menifee

City of  
Murrieta

City of  
Temecula

County of  
Riverside

IEHP

# Method

HARC worked with the task force to develop two surveys:

## *Survey for cancer patients/survivors and their caregivers*

## *Survey for healthcare professionals*



Articles about the Task Force and the study were featured in Valley News. Newspaper advertisements recruiting participants were featured in the Riverside Press Enterprise and in the Valley News.



Task Force members helped to recruit participants by sending the online survey to their clients/patients, and by providing paper copies on location.



HARC also recruited participants via social media, including a Facebook ad campaign and many Twitter posts.

# Participants

These sampling techniques resulted in 689 participants for the community survey and 93 for the provider survey. Those who were ineligible were removed. This resulted in 533 valid participants for the community survey and 44 participants for the provider survey.

385

*cancer patients/survivors*



148

*caregivers*



44

*healthcare providers*

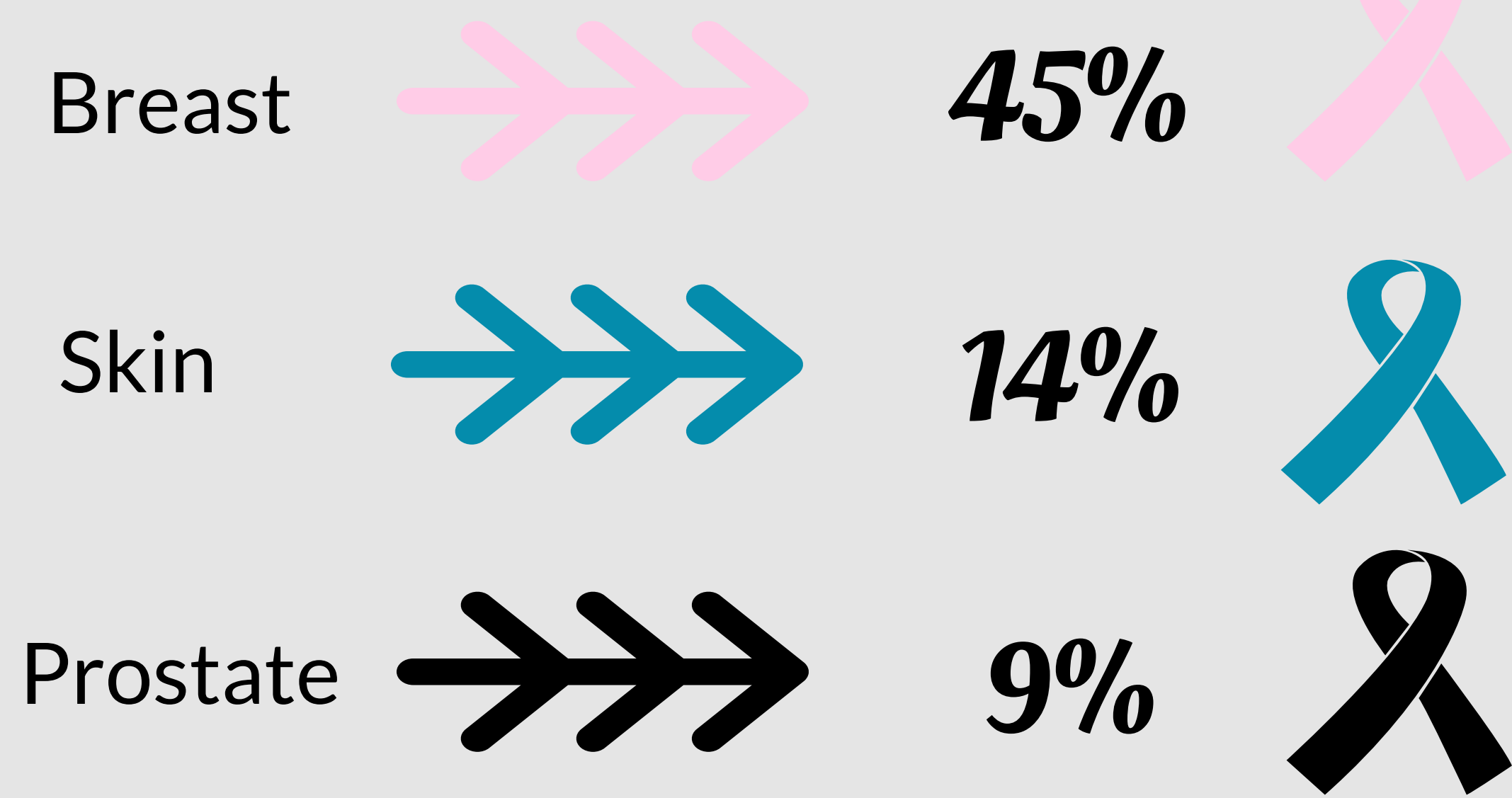




# Results

## Cancer Patients/Survivors

The most common cancer diagnoses were...



A quarter of patients/survivors were misdiagnosed at first

**25%**



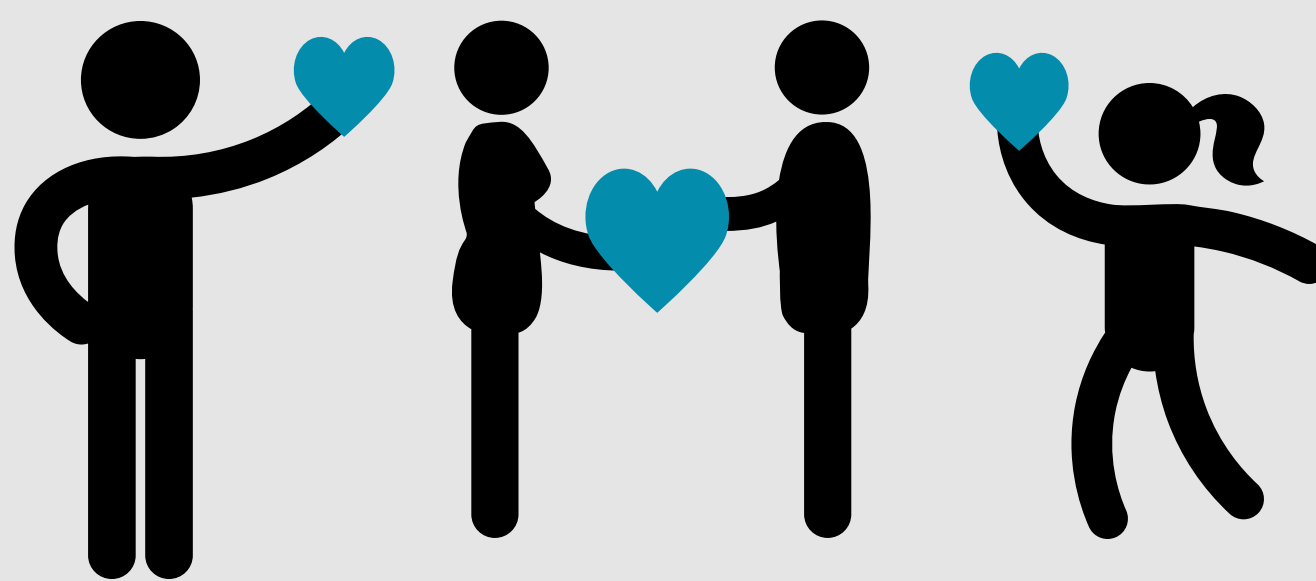
Over a third of patients/survivors delayed seeking care

**36%**



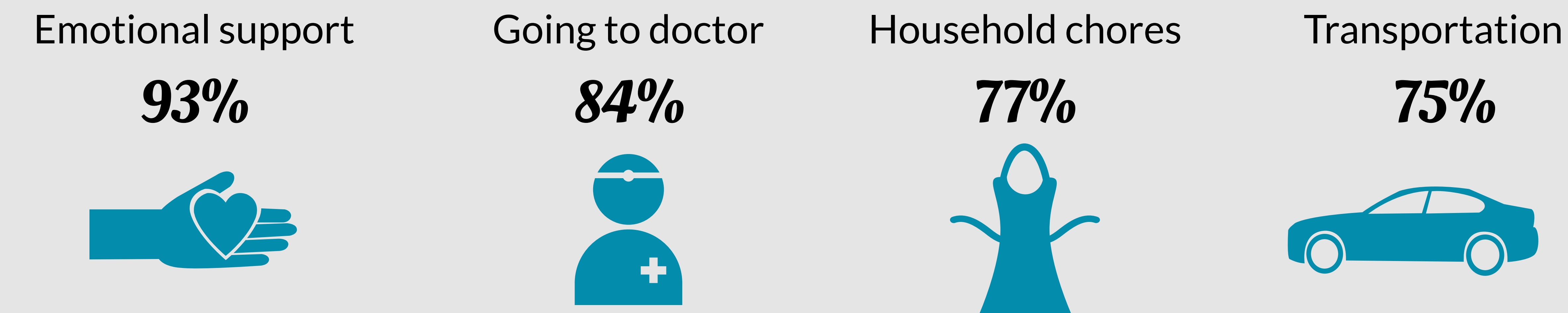
## Caregivers

Most participating caregivers were either the only caregiver for the patient (24%) or the main caregiver (35%).



Most caregivers cared for a significant other (35%) or their parent (33%)

The most common type of responsibilities for caregivers included...



## Healthcare Professionals

Half of providers were nurses

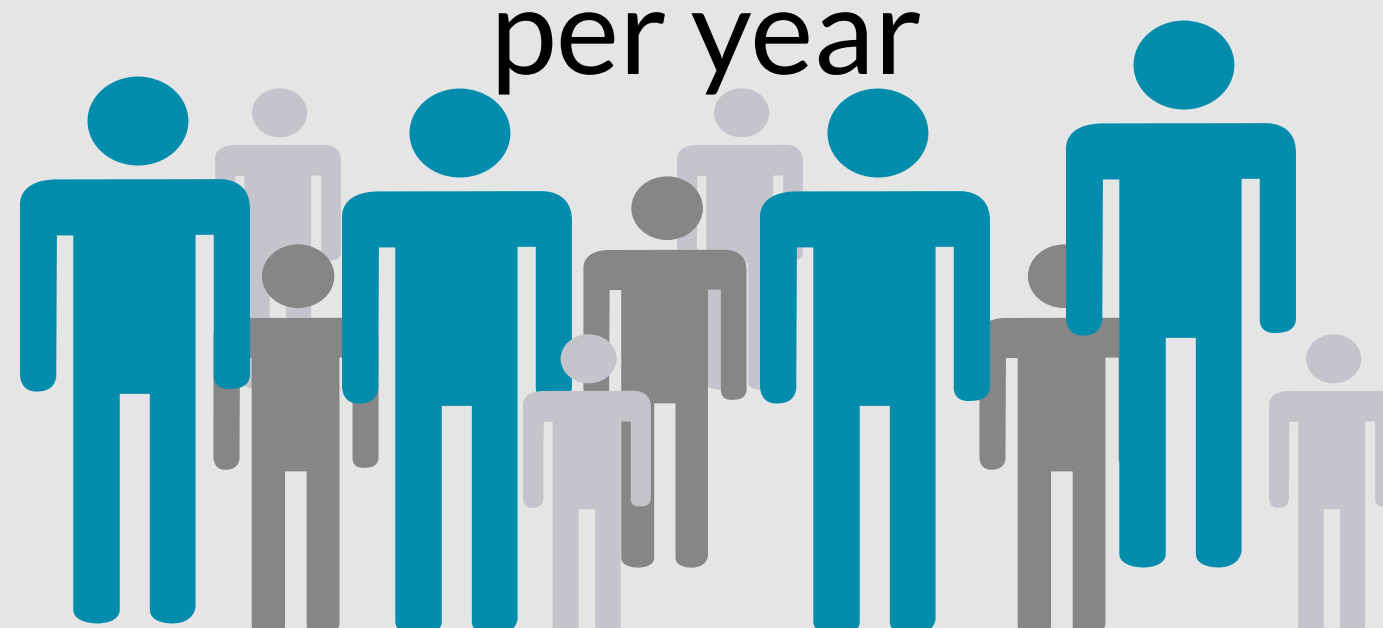
**50%**



On average, providers see

**587**

cancer patients per year



On the continuum of care, providers are engaged in...

34% screening

55% diagnosis

68% treatment

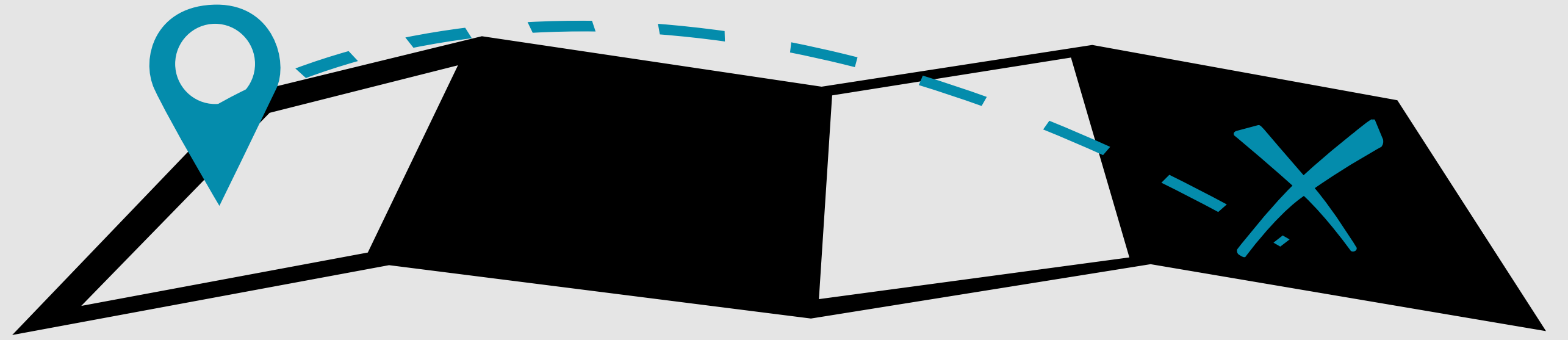
59% post-cancer care

# Key Findings

About a quarter of cancer patients/survivors

**26%**

traveled 50 miles or more to get their treatment



Both patient/survivors and caregivers believe that the most critical cancer care issues in the region are lack of accredited cancer centers and a lack of specialized care.

Cancer patients/survivors

Caregivers

**42%**

**33%**

**54%**

**52%**

Lack of accredited cancer centers

Lack of specialized care

Lack of accredited cancer centers

Lack of specialized care

Cancer patients/survivors w

**1** Finding community resources

**32%**



**2** Paying for treatment

**24%**



**3** Applying for benefits

**24%**



**87%** of providers refer patients outside of the area, usually due to...

Availability of clinical trials

**69%**

Rare type of cancer

**47%**

More therapeutic options available

**47%**



This infographic presents only a few findings from the full report. To access the full report, please contact the City of Temecula. If you have any questions about this study, or the content of this report, please contact HARC at [staff@HARCdata.org](mailto:staff@HARCdata.org)